

# Bassoon *SOUTHERN CALIFORNIA SCHOOL BAND AND ORCHESTRA ASSOCIATION*

♩ = 96

JUNIOR HIGH SCHOOL

## HONOR BAND & ORCHESTRA WIND SCALES

Revised 2003

**Play scales at speed given.**

**Play scales by memory.**

1) **SCORING:** Each of the seven major scales are worth ten points each. The chromatic scale is worth twenty points. (90 points total)

2) **BONUS POINTS:** A one or two point bonus is available if you can play the scales from the audition scale sheet that have an “a” after the number. You may choose to play either the standard scale or the bonus scale, but not both. Each bonus scale is clearly marked **in bold**, along with its added value. **NOTE:** Choose carefully which scale you perform. A poorly-played bonus scale may give you a lower score than a well-played regular scale.

3) **DEDUCTIONS:** When preparing your scales, remember that the following are mandatory deductions:

- |  |  |
|--|--|
| 1. False start or second try (-1 point)                            | 4. Uneven rhythm (-1 point)  |
| 2. Note mistakes (-1 point each)                                   | 5. Speed too slow (-1 point)   |
| 3. Not playing in key signature<br>will result in a score of zero. | 6. Missed or incorrect articulation,<br>i.e. slurring and tonguing patterns (-1 point) |

**Chromatic scale:** Most students will need to breathe during the slurred chromatic scale. Take a quick breath when needed and continue on without losing your rhythm and no deductions will be given.

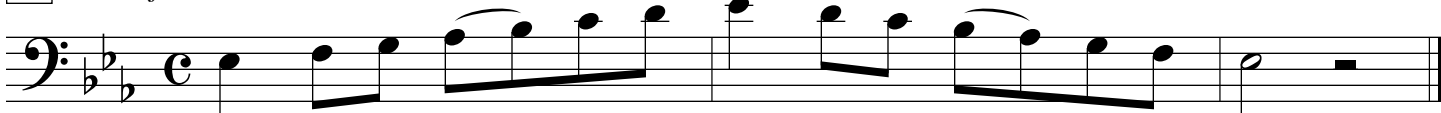
4) **SPEED:** A metronome will be used to give the speed at which you are to play your scales for maximum credit. The metronome will then be turned off and you will be asked to play your first scale. Scales will be asked for in the order given on your scale sheet. If you choose to play any of the scales slower than the speed given you will receive a one point deduction for that scale. **NOTE:** Please **do not play the scales faster** than the speed given. We want to hear everyone perform the scales at the same speed.

5) **HINT:** To maximize your auditioning experience we recommend you practice performing in front of people several times. Make up a few try-out forms and have someone score your performance.

1 *Ab Major*



2 *Eb Major*



2a *(One Point Bonus)*





8 *Chromatic*

Exercise 8 is a chromatic scale in the bass clef, common time. It consists of two lines of music. The first line starts on G2 and ascends chromatically to G4, with a slur and a fermata over the entire line. The second line starts on G4 and descends chromatically to G1, also with a slur and a fermata. Triplet markings (the number 3) are placed above the first three notes of each line and below the last three notes of each line.

8a *(Two Point Bonus)*

Exercise 8a is a chromatic scale in the bass clef, common time, presented in three lines. The first line ascends from G2 to G4, the second line descends from G4 to G2, and the third line descends from G2 to G1. Each line is slurred and has a fermata at the end. Triplet markings (the number 3) are placed above the first three notes and below the last three notes of each line.