

# Baritone Saxophone

♩ = 96

SOUTHERN CALIFORNIA SCHOOL BAND AND ORCHESTRA ASSOCIATION

JUNIOR HIGH SCHOOL

## HONOR BAND & ORCHESTRA WIND SCALES

Revised 2003

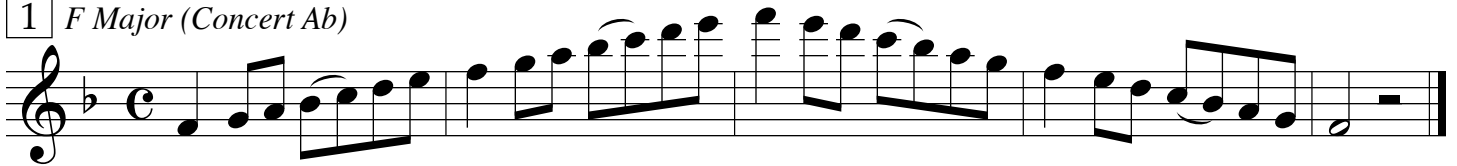
Play scales at speed given.

Play scales by memory.

- 1) **SCORING:** Each of the seven major scales are worth ten points each. The chromatic scale is worth twenty points. (90 points total)
- 2) **BONUS POINTS:** A one or two point bonus is available if you can play the scales from the audition scale sheet that have an “a” after the number. You may choose to play either the standard scale or the bonus scale, but not both. Each bonus scale is clearly marked **in bold**, along with its added value. **NOTE:** Choose carefully which scale you perform. A poorly-played bonus scale may give you a lower score than a well-played regular scale.
- 3) **DEDUCTIONS:** When preparing your scales, remember that the following are mandatory deductions:
  1. False start or second try (-1 point)
  2. Note mistakes (-1 point each)
  3. Not playing in key signature will result in a score of zero.
  4. Uneven rhythm (-1 point)
  5. Speed too slow (-1 point)
  6. Missed or incorrect articulation, i.e. slurring and tonguing patterns (-1 point)

**Chromatic scale:** Most students will need to breathe during the slurred chromatic scale. Take a quick breath when needed and continue on without losing your rhythm and no deductions will be given.
- 4) **SPEED:** A metronome will be used to give the speed at which you are to play your scales for maximum credit. The metronome will then be turned off and you will be asked to play your first scale. Scales will be asked for in the order given on your scale sheet. If you choose to play any of the scales slower than the speed given you will receive a one point deduction for that scale. **NOTE:** Please **do not play the scales faster** than the speed given. We want to hear everyone perform the scales at the same speed.
- 5) **HINT:** To maximize your auditioning experience we recommend you practice performing in front of people several times. Make up a few try-out forms and have someone score your performance.

1 *F Major (Concert Ab)*



4 *D Major (Concert F)*

Musical notation for D Major (Concert F) scale, starting on F4 and ending on F5. The scale is written in treble clef with a key signature of two sharps (F# and C#) and a common time signature (C). The notes are: F4, G4, A4, B4, C5, B4, A4, G4, F4. The piece concludes with a double bar line.

5 *A Major (Concert C)*

Musical notation for A Major (Concert C) scale, starting on C4 and ending on C5. The scale is written in treble clef with a key signature of three sharps (F#, C#, G#) and a common time signature (C). The notes are: C4, D4, E4, F#4, G4, A4, G4, F#4, E4, D4, C4. The piece concludes with a double bar line.

6 *E Major (Concert G)*

Musical notation for E Major (Concert G) scale, starting on G4 and ending on G5. The scale is written in treble clef with a key signature of four sharps (F#, C#, G#, D#) and a common time signature (C). The notes are: G4, A4, B4, C#5, D5, E5, D5, C#5, B4, A4, G4. The piece concludes with a double bar line.

7 *B Major (Concert D)*

Musical notation for B Major (Concert D) scale, starting on D4 and ending on D5. The scale is written in treble clef with a key signature of five sharps (F#, C#, G#, D#, A#) and a common time signature (C). The notes are: D4, E4, F#4, G#4, A#4, B4, A#4, G#4, F#4, E4, D4. The piece concludes with a double bar line.

8 *Chromatic*

Musical notation for Chromatic scale, starting on C4 and ending on C5. The scale is written in treble clef with a common time signature (C). The notes are: C4, C#4, D4, D#4, E4, E#4, F4, F#4, G4, G#4, A4, A#4, B4, B#4, C5. The piece concludes with a double bar line.

8a *(Two Point Bonus)*

Musical notation for Chromatic scale (Two Point Bonus), starting on C4 and ending on C5. The scale is written in treble clef with a common time signature (C). The notes are: C4, C#4, D4, D#4, E4, E#4, F4, F#4, G4, G#4, A4, A#4, B4, B#4, C5. The piece concludes with a double bar line.