

Clarinet

♩ = 144

SOUTHERN CALIFORNIA SCHOOL BAND AND ORCHESTRA ASSOCIATION

JUNIOR HIGH SCHOOL

HONOR BAND & ORCHESTRA WIND SCALES

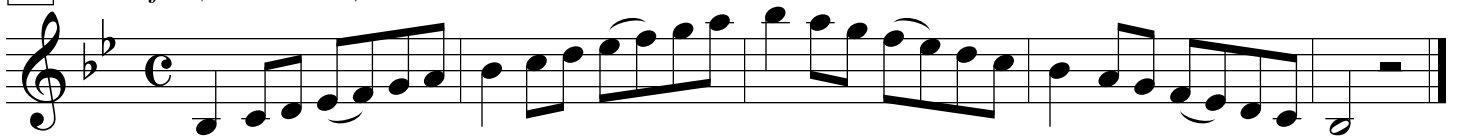
Revised 2003

Play scales at speed given.

Play scales by memory.

- 1) **SCORING:** Each of the seven major scales are worth ten points each. The chromatic scale is worth twenty points. (90 points total)
- 2) **BONUS POINTS:** A one or two point bonus is available if you can play the scales from the audition scale sheet that have an “a” after the number. You may choose to play either the standard scale or the bonus scale, but not both. Each bonus scale is clearly marked **in bold**, along with its added value. **NOTE:** Choose carefully which scale you perform. A poorly-played bonus scale may give you a lower score than a well-played regular scale.
- 3) **DEDUCTIONS:** When preparing your scales, remember that the following are mandatory deductions:
 1. False start or second try (-1 point)
 2. Note mistakes (-1 point each)
 3. Not playing in key signature will result in a score of zero.
 4. Uneven rhythm (-1 point)
 5. Speed too slow (-1 point)
 6. Missed or incorrect articulation, i.e. slurring and tonguing patterns (-1 point)
- Chromatic scale:** Most students will need to breathe during the slurred chromatic scale. Take a quick breath when needed and continue on without losing your rhythm and no deductions will be given.
- 4) **SPEED:** A metronome will be used to give the speed at which you are to play your scales for maximum credit. The metronome will then be turned off and you will be asked to play your first scale. Scales will be asked for in the order given on your scale sheet. If you choose to play any of the scales slower than the speed given you will receive a one point deduction for that scale. **NOTE:** Please **do not play the scales faster** than the speed given. We want to hear everyone perform the scales at the same speed.
- 5) **HINT:** To maximize your auditioning experience we recommend you practice performing in front of people several times. Make up a few try-out forms and have someone score your performance.

1 *Bb Major (Concert Ab)*



2 *F Major (Concert Eb)*



2a *(One Point Bonus)*

Two staves of musical notation for scale 2a. The first staff shows the ascending scale in C minor (one flat) with a common time signature. The second staff shows the descending scale. The notes are: C4, D4, E4, F4, G4, A4, B4, C5, B4, A4, G4, F4, E4, D4, C4.

3 *C Major (Concert Bb)*

One staff of musical notation for scale 3. The key signature is C major (no sharps or flats) and the time signature is common time. The notes are: C4, D4, E4, F4, G4, A4, B4, C5, B4, A4, G4, F4, E4, D4, C4.

4 *G Major (Concert F)*

One staff of musical notation for scale 4. The key signature is G major (one sharp) and the time signature is common time. The notes are: G4, A4, B4, C5, B4, A4, G4, F4, E4, D4, C4, B3, A3, G3.

4a *(One Point Bonus)*

Two staves of musical notation for scale 4a. The first staff shows the ascending scale in G major (one sharp). The second staff shows the descending scale. The notes are: G4, A4, B4, C5, B4, A4, G4, F4, E4, D4, C4, B3, A3, G3.

5 *D Major (Concert C)*

One staff of musical notation for scale 5. The key signature is D major (two sharps) and the time signature is common time. The notes are: D4, E4, F#4, G4, A4, B4, C5, B4, A4, G4, F#4, E4, D4, C4.

