

Mallet Percussion

♩ = 144

SOUTHERN CALIFORNIA SCHOOL BAND AND ORCHESTRA ASSOCIATION

JUNIOR HIGH SCHOOL

HONOR BAND & ORCHESTRA SCALES

Revised 2003

Play scales at speed given.

Play scales by memory.

1) **SCORING:** Each of the seven major scales are worth ten points each. The chromatic scale is worth twenty points. (90 points total)

2) **DEDUCTIONS:** When preparing your scales, remember that the following are mandatory deductions:

- | | |
|--|--|
| 1. False start or second try (-1 point) | 4. Uneven rhythm (-1 point) |
| 2. Note mistakes (-1 point each) | 5. Speed too slow (-1 point) |
| 3. Not playing in key signature
will result in a score of zero. | 6. Missed or incorrect articulation,
i.e. slurring and tonguing patterns (-1 point) |

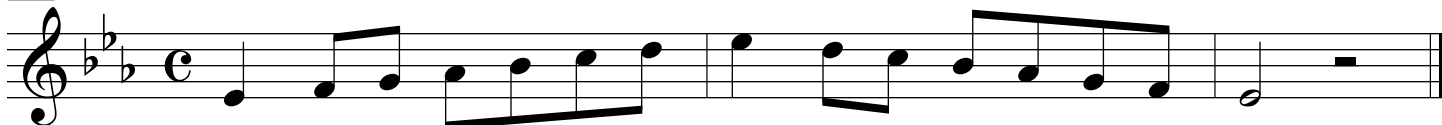
3) **SPEED:** A metronome will be used to give the speed at which you are to play your scales for maximum credit. The metronome will then be turned off and you will be asked to play your first scale. Scales will be asked for in the order given on your scale sheet. If you choose to play any of the scales slower than the speed given you will receive a one point deduction for that scale. **NOTE:** Please **do not play the scales faster** than the speed given. We want to hear everyone perform the scales at the same speed.

4) **HINT:** To maximize your auditioning experience we recommend you practice performing in front of people several times. Make up a few try-out forms and have someone score your performance.

1 *Ab Major*



2 *Eb Major*



3 *Bb Major*

Musical notation for the Bb Major scale in treble clef, common time. The scale consists of 11 notes: Bb, C, D, Eb, F, G, Ab, Bb, C, D, Eb. The notation shows an ascending line of eighth notes followed by a descending line of eighth notes, ending with a whole note Bb.

4 *F Major*

Musical notation for the F Major scale in treble clef, common time. The scale consists of 11 notes: F, G, A, Bb, C, D, E, F, G, A, Bb. The notation shows an ascending line of eighth notes followed by a descending line of eighth notes, ending with a whole note F.

5 *C Major*

Musical notation for the C Major scale in treble clef, common time. The scale consists of 11 notes: C, D, E, F, G, A, B, C, D, E, F. The notation shows an ascending line of eighth notes followed by a descending line of eighth notes, ending with a whole note C.

6 *G Major*

Musical notation for the G Major scale in treble clef, common time. The scale consists of 11 notes: G, A, B, C, D, E, F#, G, A, B, C. The notation shows an ascending line of eighth notes followed by a descending line of eighth notes, ending with a whole note G.

7 *D Major*

Musical notation for the D Major scale in treble clef, common time. The scale consists of 11 notes: D, E, F#, G, A, B, C#, D, E, F#, G. The notation shows an ascending line of eighth notes followed by a descending line of eighth notes, ending with a whole note D.

8 *Chromatic*

Musical notation for the chromatic scale in treble clef, common time. The scale consists of 24 notes, ascending and then descending. The ascending part starts on C and goes up to C# (C, C#, D, D#, E, E#, F, F#, G, G#, A, A#, B, B#, C). The descending part starts on C# and goes down to C (C#, B, Bb, Ab, G, Gb, F, Fb, E, Eb, D, Db, C). The notation shows groups of eighth notes with a '3' above or below them, indicating triplet rhythms. The scale ends with a whole note C.